

ANAND
Systems Engg. Pvt. Ltd.

**SAFELINK
W
BOLT TYPE**

SAFELINK W CONDUCTOR BAR RATINGS

60/100/125- GALVANISED STEEL
160/250/400-COPPER
200/315-ALUMINIUM/SS

Safelink Conductor bars are used for power transmission. Conductor rail provide a safe & economical supply of electric power for track guide mobile machinery. Single pole individually insulated conductors. Ideally used for EOT crane.

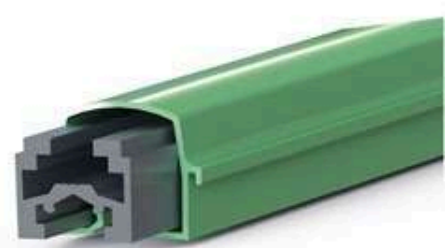
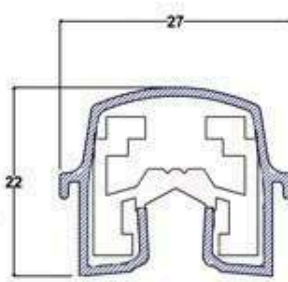
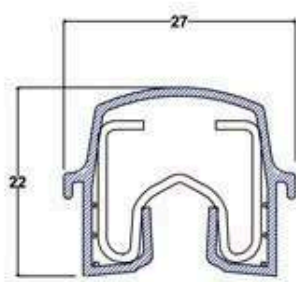
- Insulated Conductors are touch proof, no exposed live parts to contacts
- Quick & Easy Installation with 1 Pole and 4 Pole Hanger
- 4.5 Meters Bar Length
- Cover Designed to shed water and dust
- Joint Cover provides total protection of joints
- Enclosed Wiring for connection on collectors
- No Expansion Joints upto 150 Meters long System

PRODUCT DETAILS



Copper / G.I. Profile

Safelink W series
GI 60/100/125/160 Amps
Cu 160/250/400 Amps



Aluminium Profile

Safelink W series
200/315 Amps

Safelink W series conductor bars are finger safe, insulated and accident free.



www.anandcontrol.in

116 Acharya Ind. Est., Andheri Kurla Road, Sakinaka,
Mumbai - 400072, Maharashtra, India.

91376-20579
www.anandcontrol.in

Safelink W DSL Busbar

TECHNICAL DATA

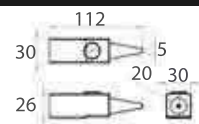
CONDUCTOR BAR		GALVANIZED IRON			COPPER		ALUMINIUM WITH SS STRIP		
Nominal Current	60A	100A	125A	160A	250A	400A	200A	315A	400A
Cross Sectional Area (sq mm)	52.8	66	93	52.8	66	93	115	132	170
DC Resistance Ohms/M	0.003584	0.00286	0.00193	0.000342	0.000274	0.000184	0.000301	0.000261	0.000199
Impedence Ohms/M	0.003604	0.00289	0.00196	0.000364	0.0003	0.000221	0.000325	0.000288	0.000234
Ambient Temperature Range						-30°C + 55°C			
Support Pitch	Standard					1500MM			
	Lateral					1125mm			
Bar Length						4500mm			
Protection Class (Finger Safe)						IP21			
Conductor Joint						Bolt Type			
CONDUCTOR BAR COVER									
Standard Insulation						PVC			
Maximum System Working Temperature						80°C			
Flame Test						Self Extinguishing			
Colour						RYBG			
INSTALLATION						INSTALLATION			
Hanger Clamps						1pole / 4pole			
Power Feeding						At joint or at any location			
Installation suitable for						Indoor / outdoor			
OTHER ACCESSORIES						Available upon request only			
Isolating Sections,High Temp. Sleeves For 120 °C									

www.anandcontrol.in

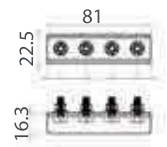
116 Acharya Ind. Est.,Andheri Kurla Road,Sakinaka,
Mumbai - 400072,Maharashtra,India.

91376-20579
info@anandcontrol.in

Accessories Safelink W



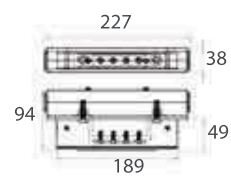
W-Type End Cap
Material – GI/AL/Cu



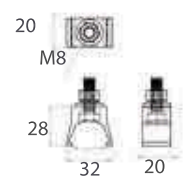
W-Type Joint Clamp
Material – GI/AL/Cu



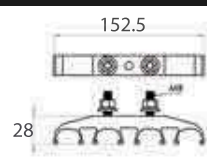
W-Type Joint Cover
Material – PPCP B120



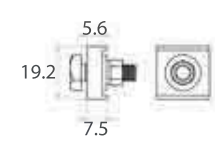
W-Type Center Power Feed
Material – GI/AL/Cu



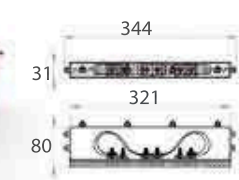
W-Type Anchor Clamp
Material – GFN 30%



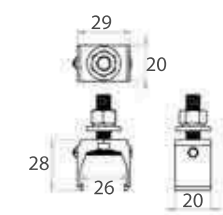
W-Type 4 Pole Hanger Clamp
Material – Derlin & GFN



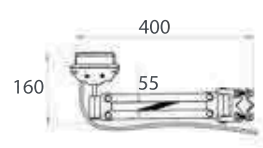
W-Type End Cover
Material – GI/AL/Cu



W-Type Expansion Joint
Material – GI/AL/Cu



W-Type Anchor Clamp
Material – GFN 30%



W-Type Current Collector

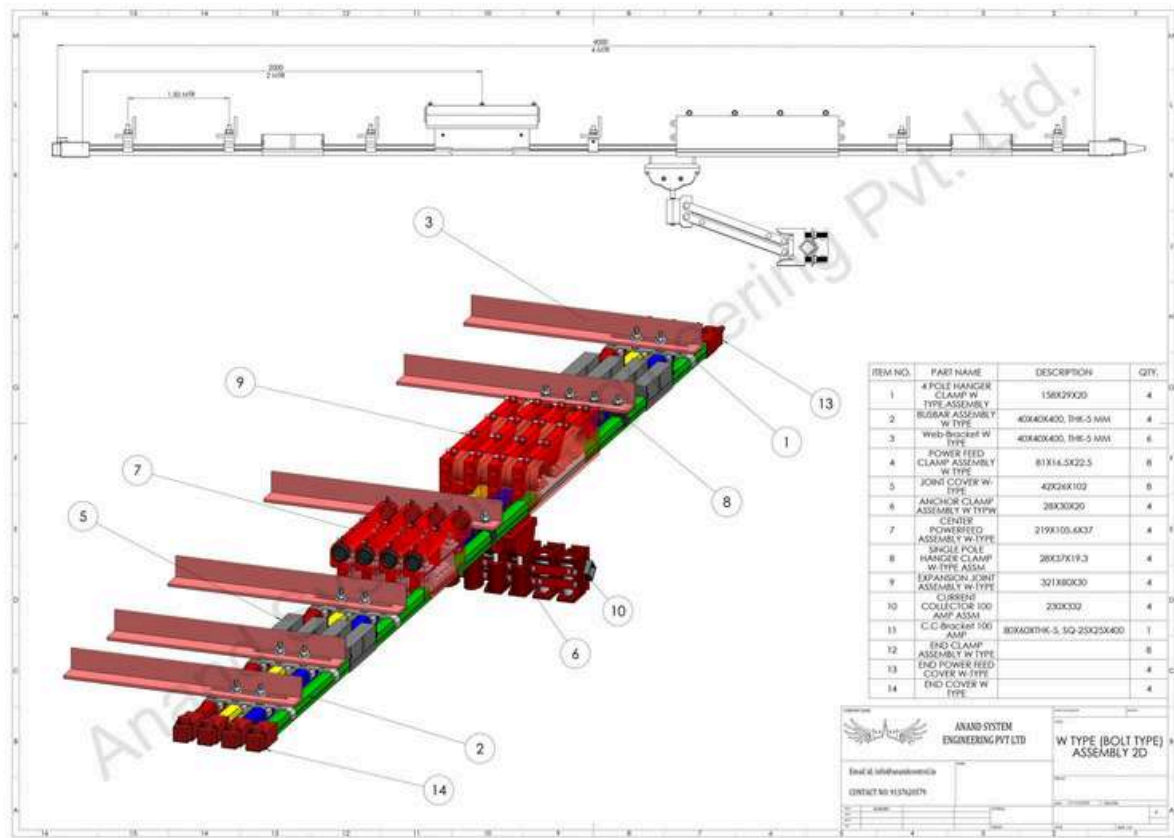
www.anandcontrol.in

116 Acharya Ind. Est., Andheri Kurla Road, Sakinaka,
Mumbai - 400072, Maharashtra, India.

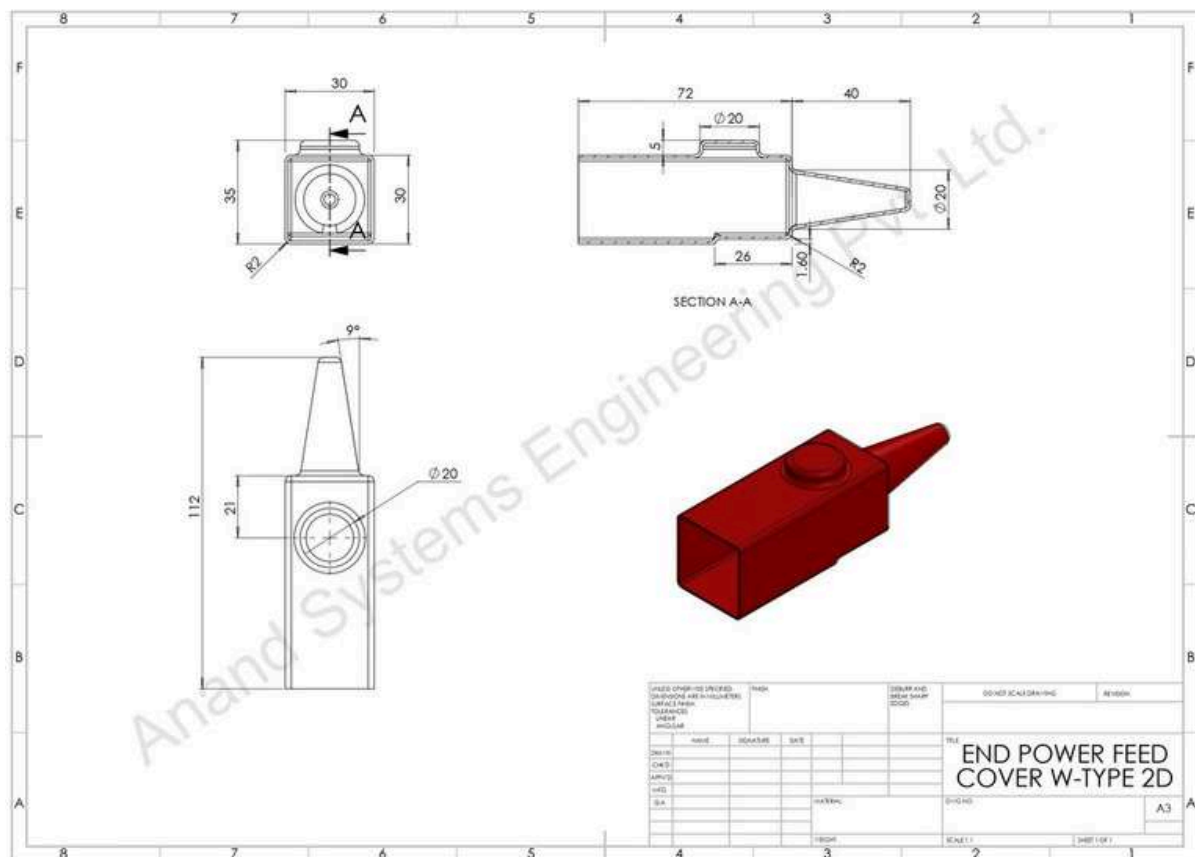
91376-20579
info@anandcontrol.in

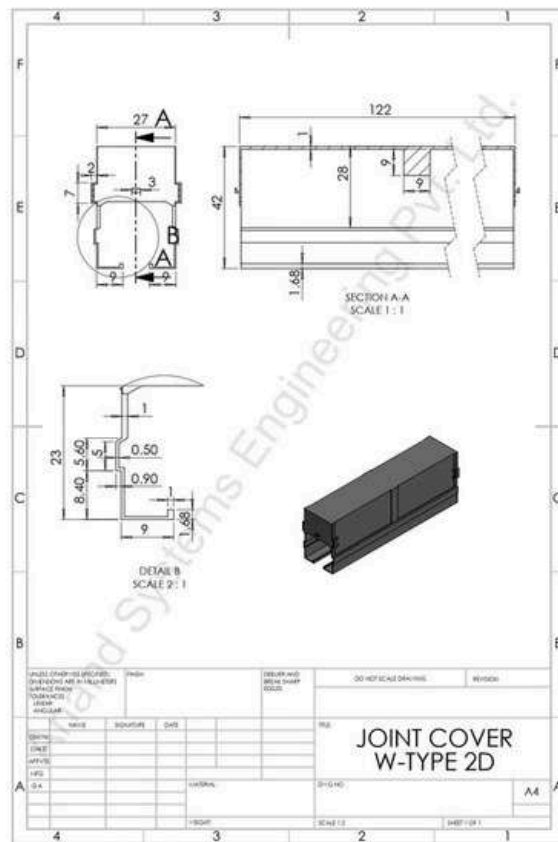
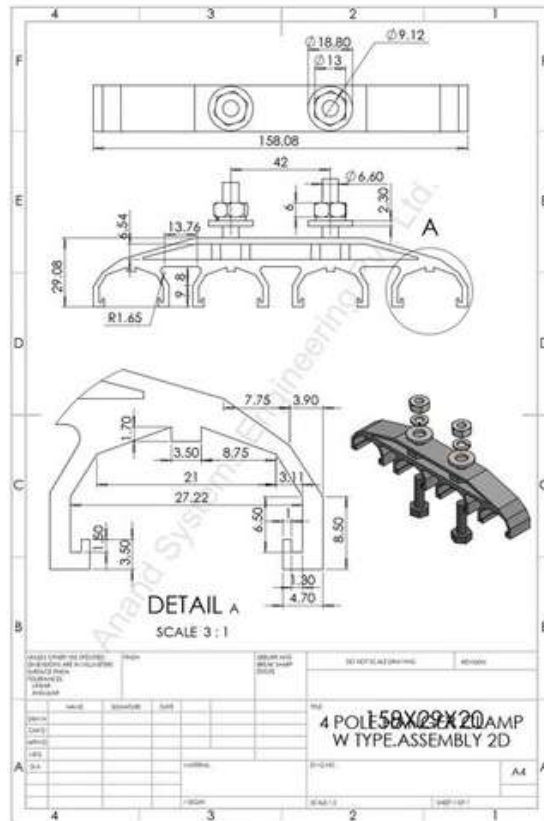


2D DRAWING OF W TYPE ASSEMBLY

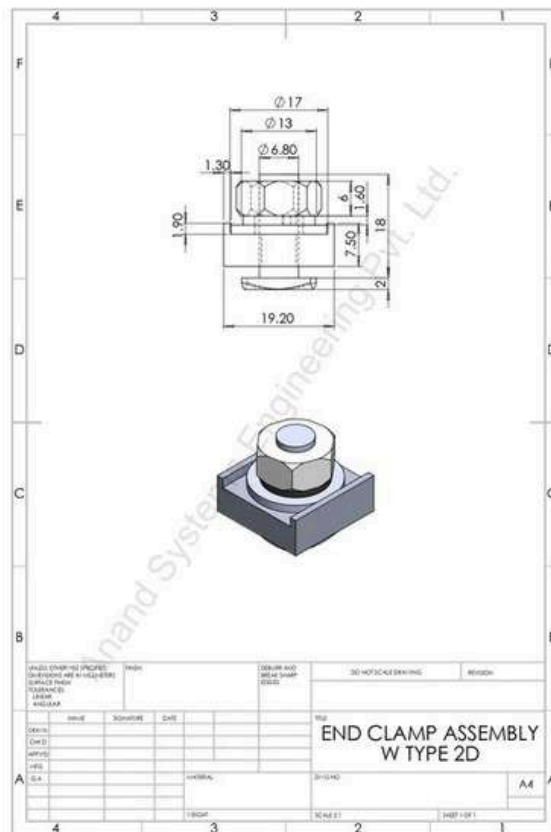


2D DRAWING OF END POWER FEED

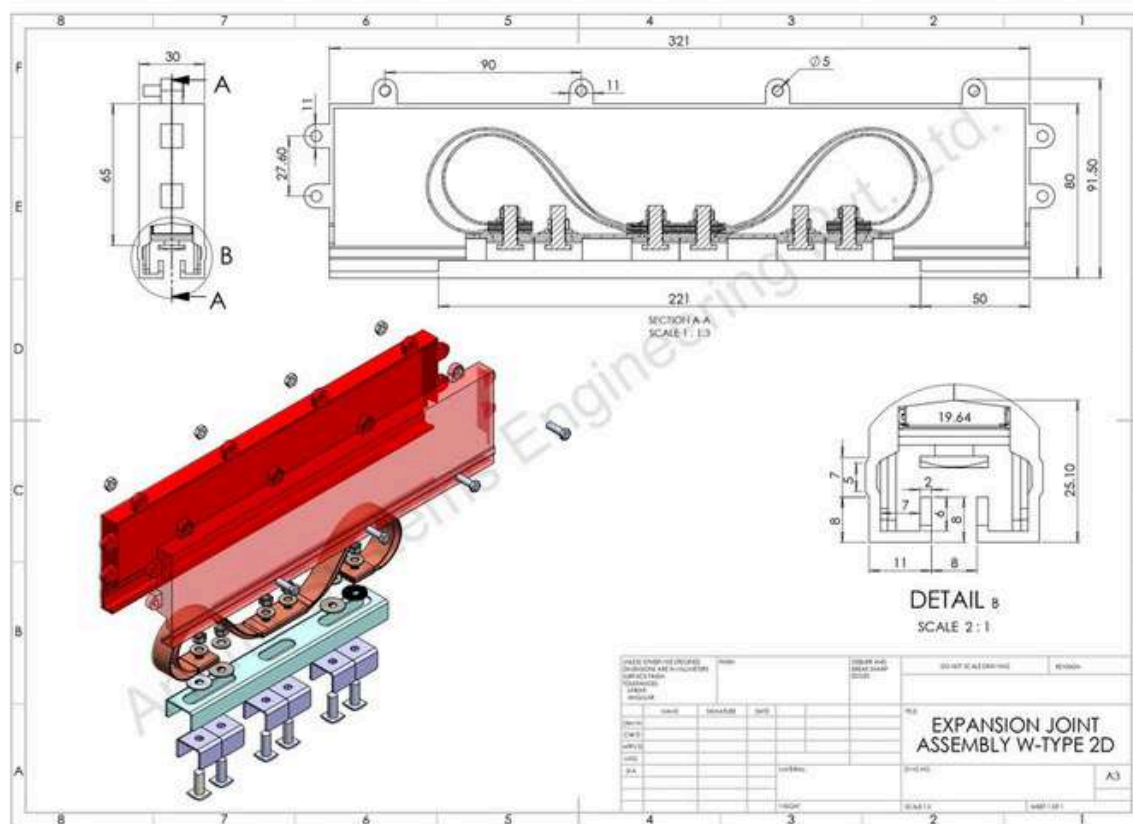




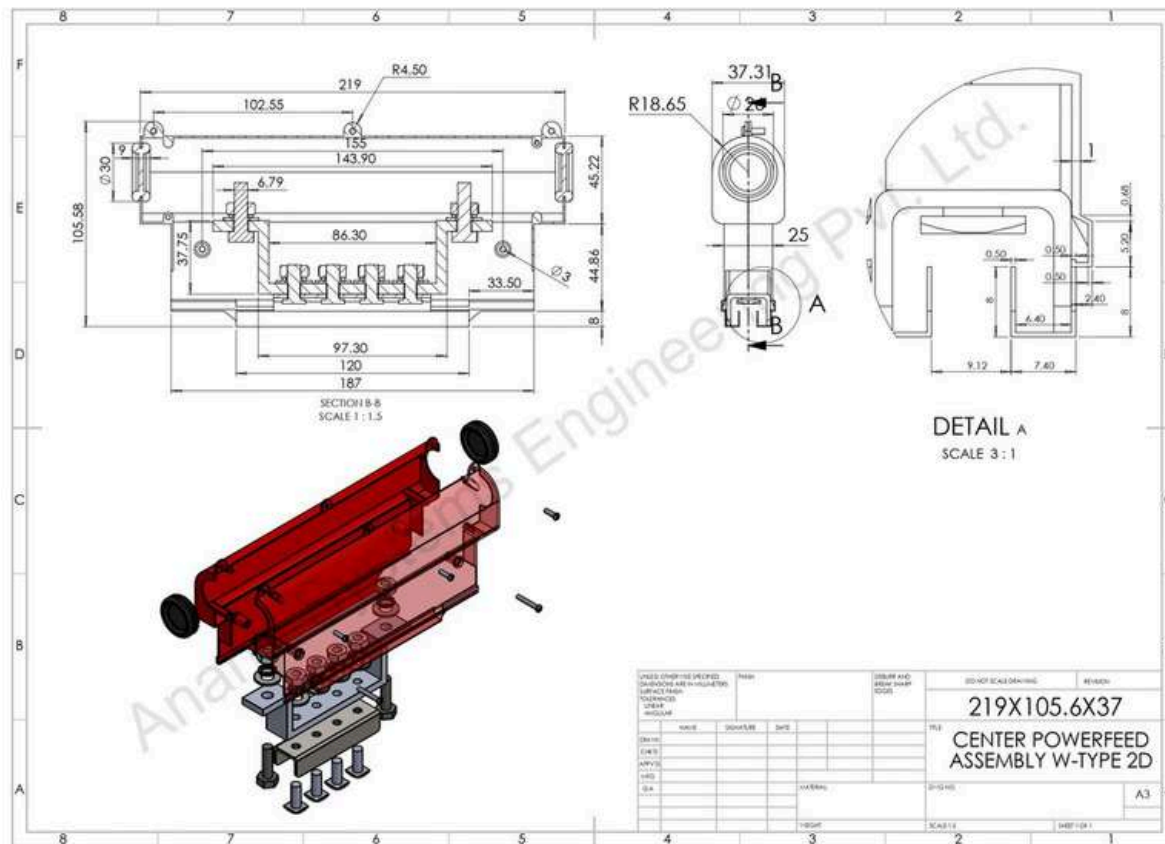
2D DRAWING OF END LAMP



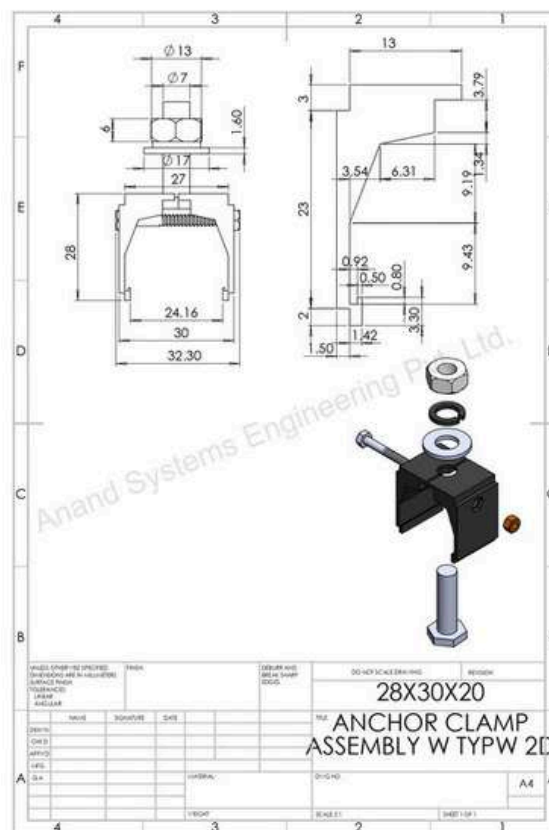
2D DRAWING OF EXPANSION JOINT



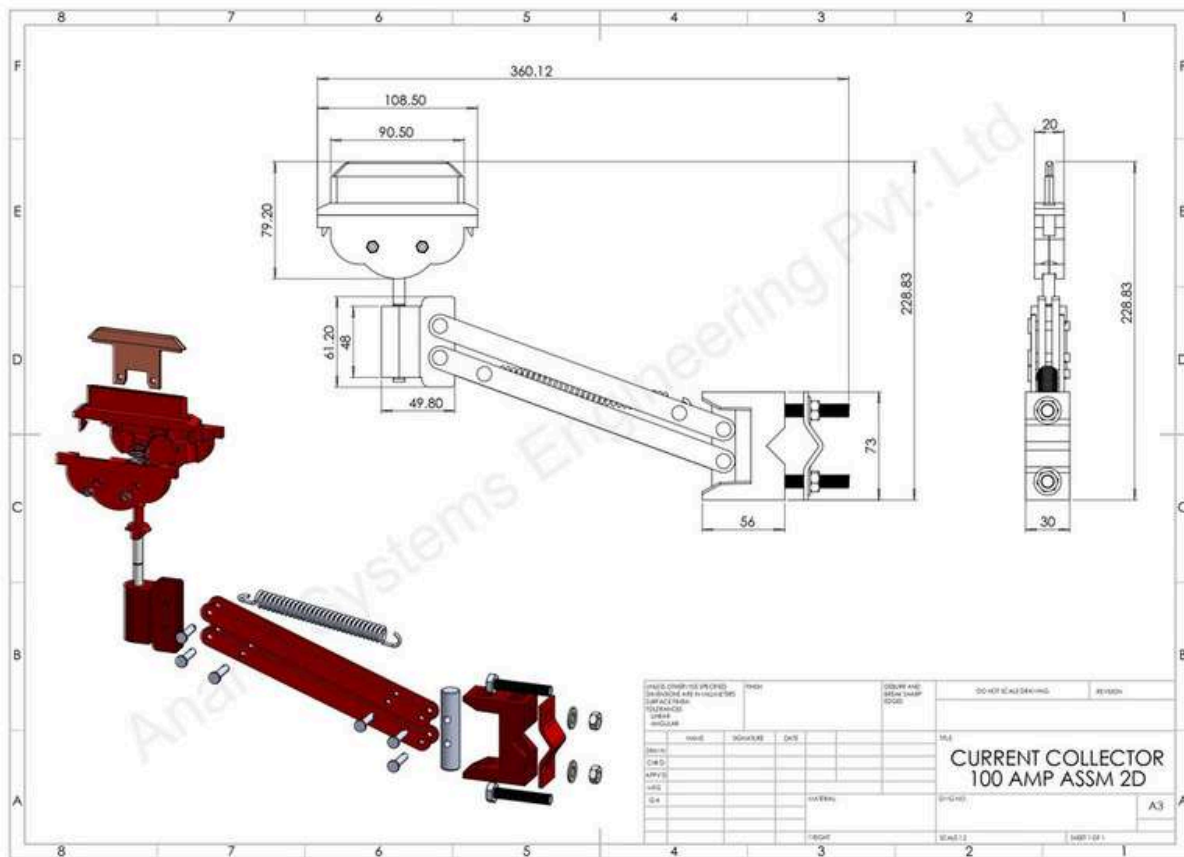
2D DRAWING OF CENTER POWER FEED



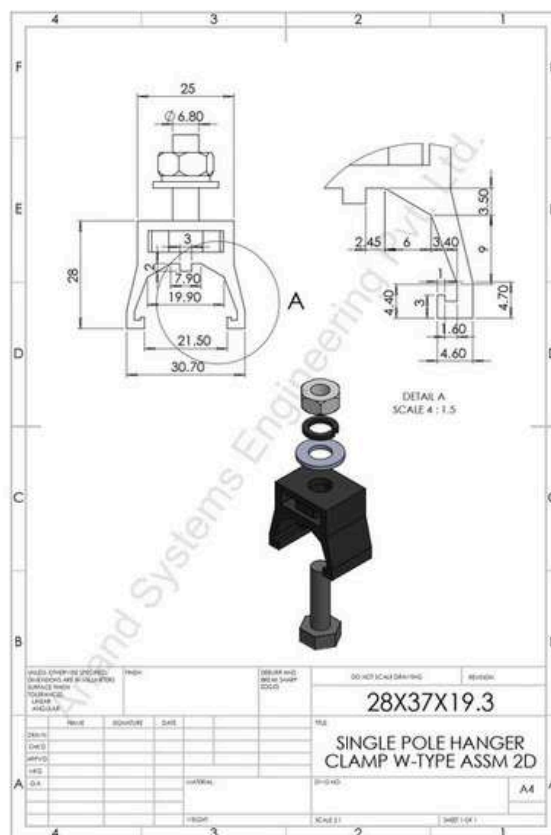
2D DRAWING OF ANCHOR CLAMP



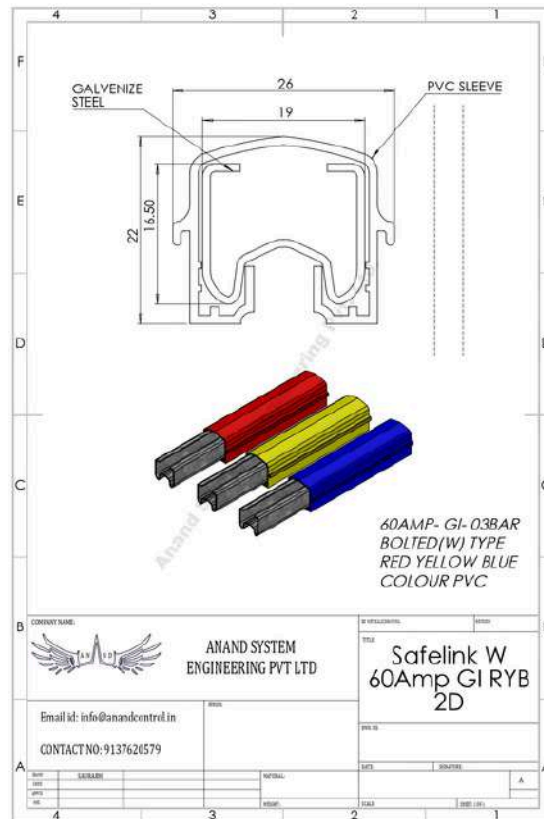
2D DRAWING OF CURRENT COLLECTOR 100 AMP



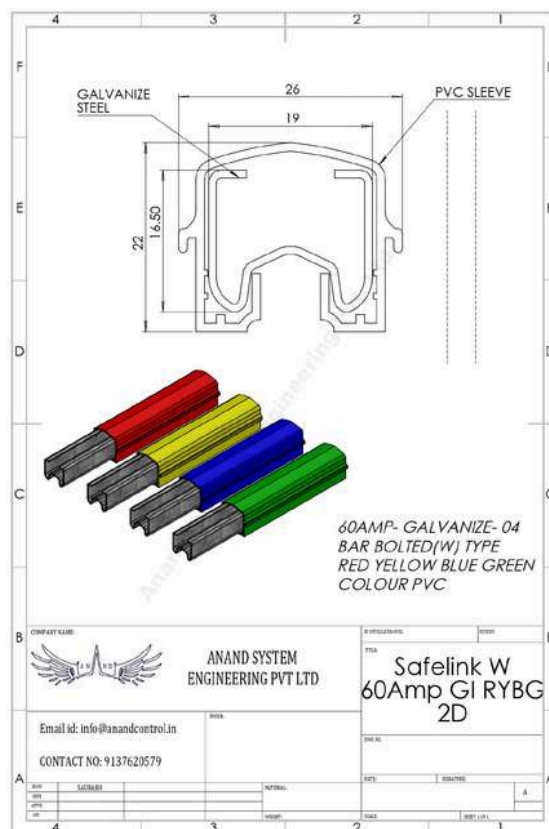
2D DRAWING OF SINGLE POLE HANGER CLAMP



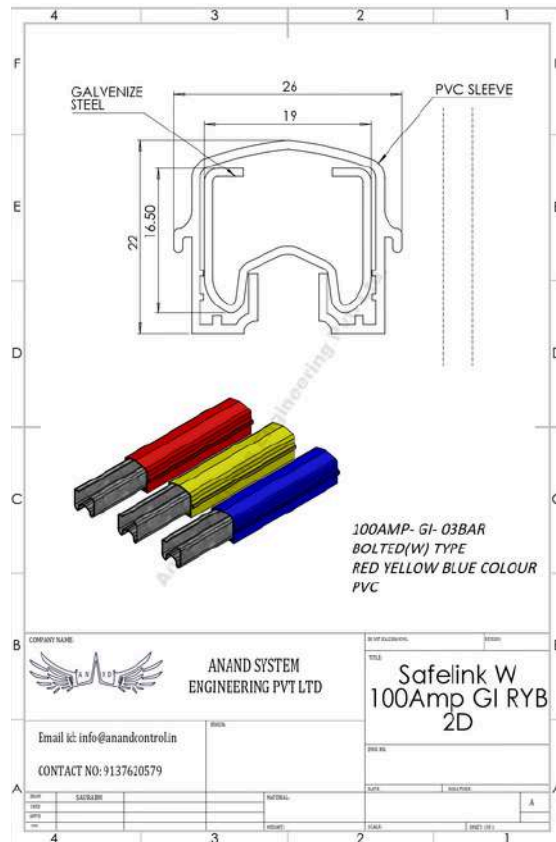
2D DRAWING OF safelink w 60A GI RYB



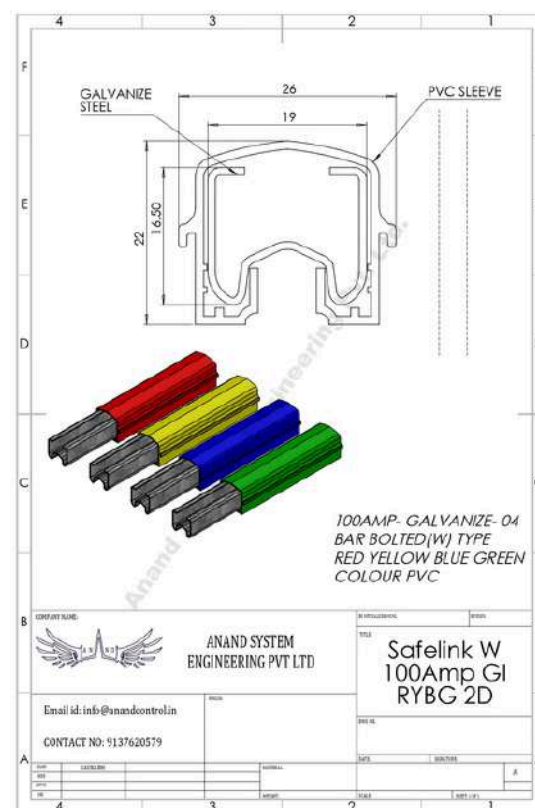
2D DRAWING OF safelink w 60A GI RYBG



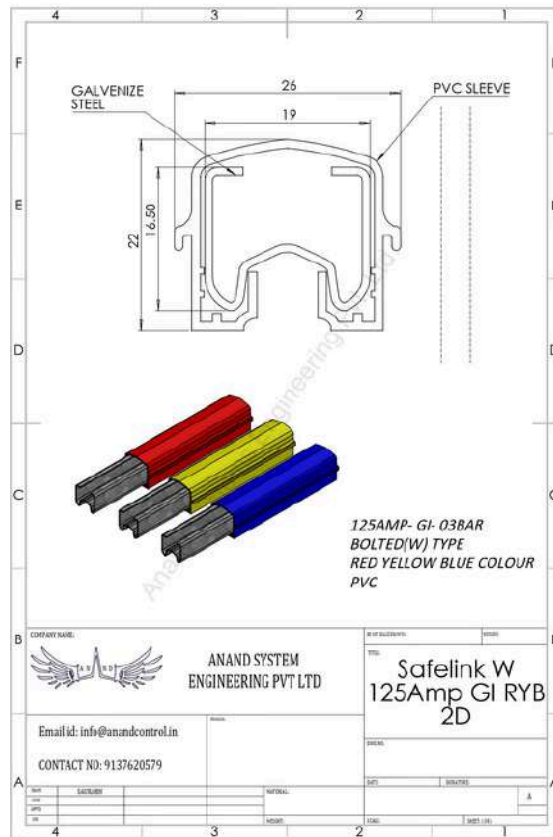
2D DRAWING OF safelink w 100A GI RYB



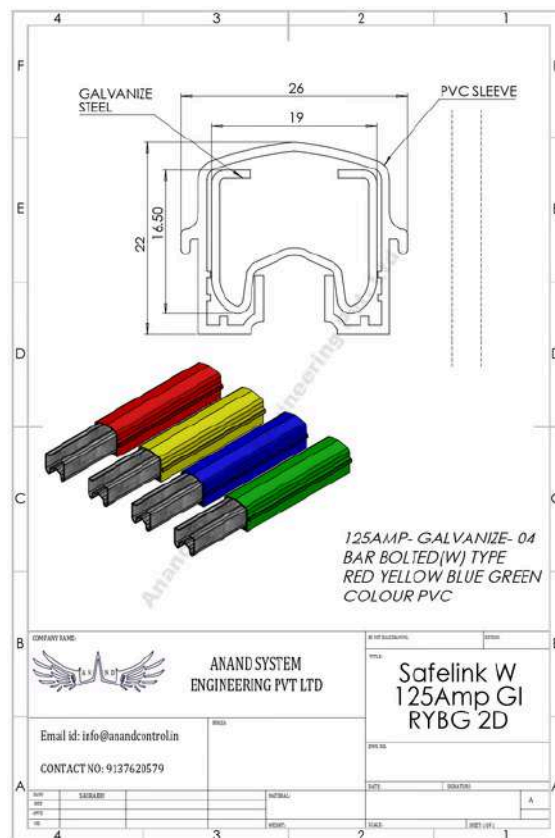
2D DRAWING OF safelink w 100A GI RYBG



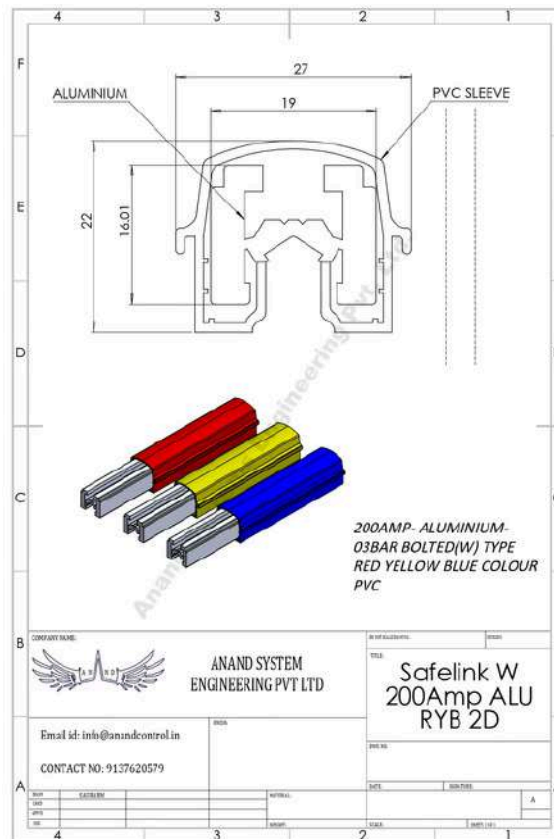
2D DRAWING OF safelink w 125A GI RYB



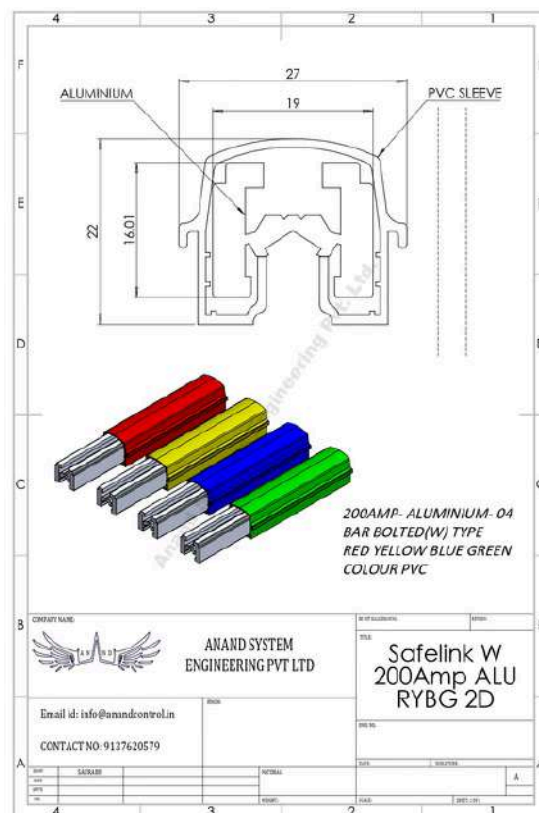
2D DRAWING OF safelink w 125A GI RYBG



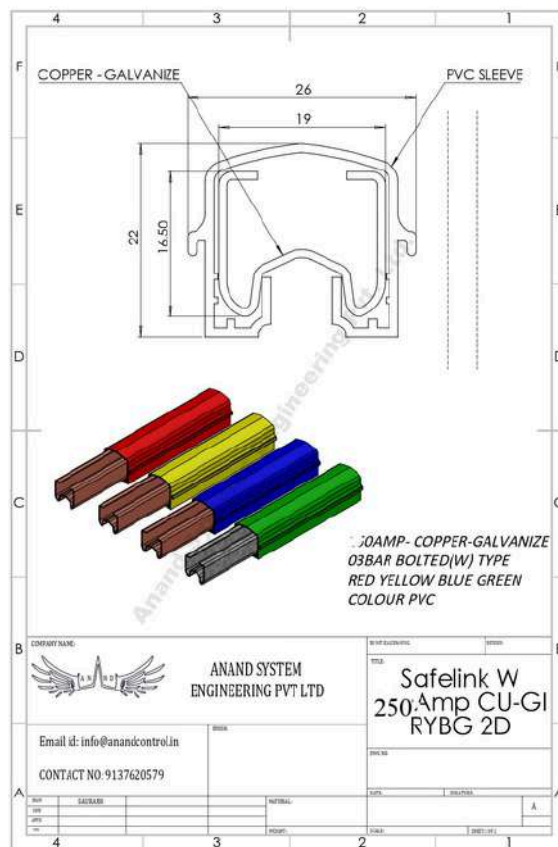
2D DRAWING OF safelink w 200A Alu RYB



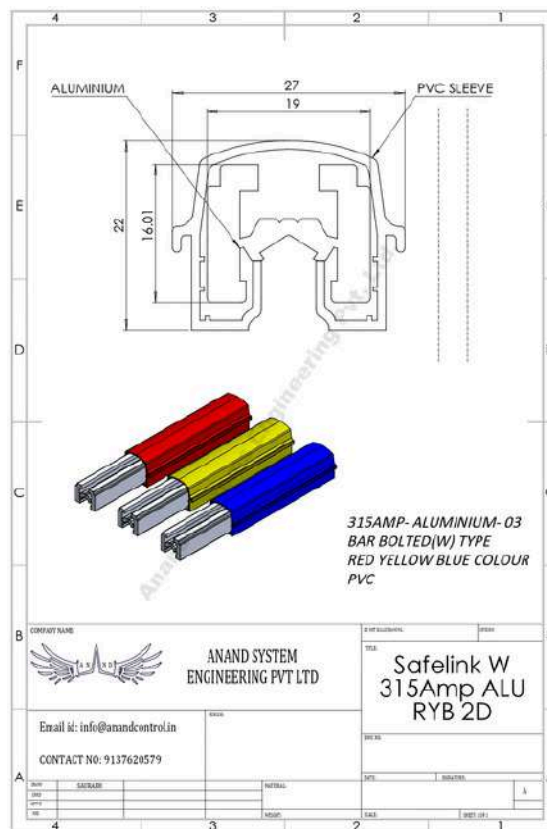
2D DRAWING OF safelink w 125A GI RYBG



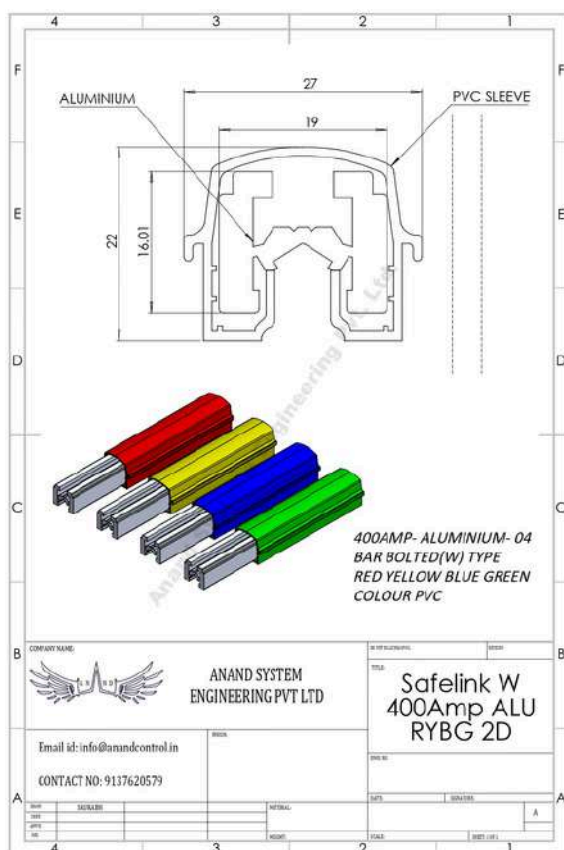
2D DRAWING OF safelink w 250A CU-GI RYBG



2D DRAWING OF safelink w 315A Alu RYB



2D DRAWING OF safelink w 400A CU-GI RYBG



2D DRAWING OF safelink w 400A CU-GI RYBG

