


EXPLODED VIEW

ITEM NO.	PART NAME	DESCRIPTION	MATERIAL	QTY.
1	BASE	780x205x65	M.S.	1
2	AL SHOE RIVET	15X ϕ 6	ALUMINIUM	16
3	BASE PIN	ϕ 16X125	M.S.	2
4	BASE PIN	ϕ 16X160	M.S.	1
5	BRAKE LINER	8X140MM	ASBESTOS	2
6	BRAKE SHOE	300X140	CAST IRON	2
7	COTTER PIN	1/8" X 11/2"	M.S.	20
8	HEX BOLT	M 10, 10X50	M.S.	2
9	HEX BOLT	M 16, 16X50	M.S.	2
10	HEX NUT	G.I. M16	M.S.	22
11	LEVER	325X8	M.S.	2
12	LEVER PIN	ϕ 16X70	M.S.	2
13	LUG	M16 TAP, SQ25X25, 50MM LONG	M.S.	1
14	M.S.BUSH	FOR LUG 21X16.5X5.5	M.S.	2
15	M.S.BUSH	FOR THRUSTER 19X13.5X8	M.S.	2
16	LEVER PIN	FOR MAIN ARM 20X100	M.S.	1
17	NAME PLATE	115X20	ALUMINIUM	1
18	NAME PLATE	70X20	ALUMINIUM	1
19	NAME PLATE RIVET	L-4.5 MM	ALUMINIUM	4
20	PLAIN WASHER	28X16.5X1.5	M.S.	4
21	PLAIN WASHER	37X20.5X1.5	M.S.	12
22	PLAIN WASHER	25X13.5X1.5	M.S.	6
23	SHOE PIN	20X160	M.S.	2
24	SHOE SUPPORT	40X35	M.S.	1
25	SIDE ARM BUSH	SQ40X40, L-60	M.S.	1
26	SPACER PIN	20X100 MIDDLE-38, M16	M.S.	2
27	SPRING WASHER	M10	SPRING STEEL	2
28	SPRING WASHER	M16	SPRING STEEL	4
29	THRUSTER PIN	12.7X70	M.S.	2
30	TIE ROD.1	L-380 X 16MM	M.S.	1
31	TIE ROD.1	L-400 X 16MM	M.S.	1
32	18KG THRUSTOR 300-18	18KG THRUSTER ASSEMBLY	-	1
33	SPRING	COMPRESS SPRING 6MM COIL, 38X 275X 22 TURNS	SPRING STEEL	2
34	GUIDE PLATE	165X40X10	M.S.	2
35	MAIN ARM	480X72X6	M.S.	1
36	SIDE ARM 300-18	490X72X6	M.S.	1
37	TIE ROD.1	L-450 X 16MM	M.S.	2
38	LUG	M16TAP, SQ25X25, 50MM LONG	M.S.	3

COMPANY NAME



ANAND SYSTEM ENGINEERING PVT LTD

DO NOT SCALE DRAWING

REVISION

TITLE:

MDT 300-18 BRAKE ASSEMBLY 2D

Email id: info@anandcontrol.in

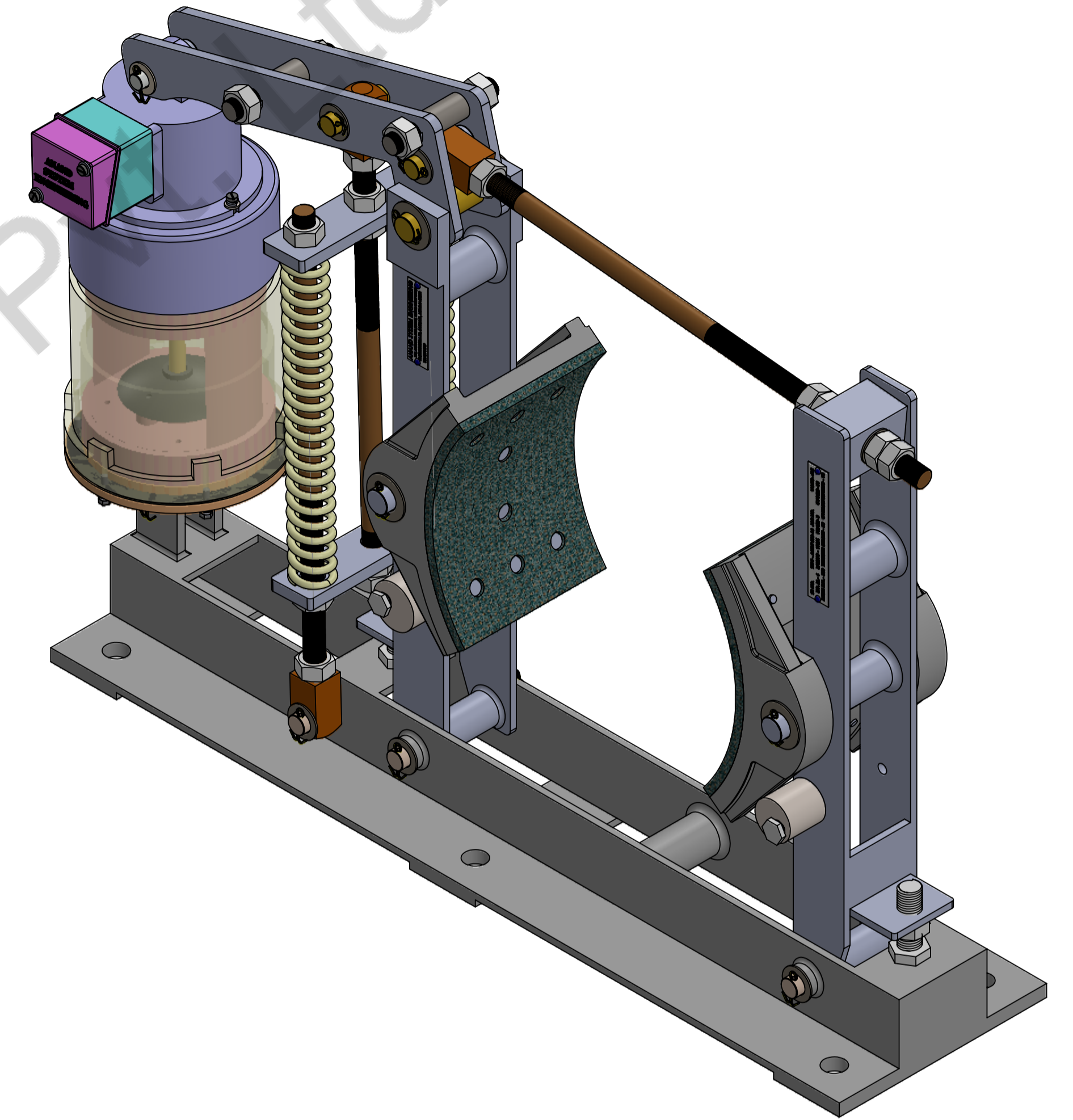
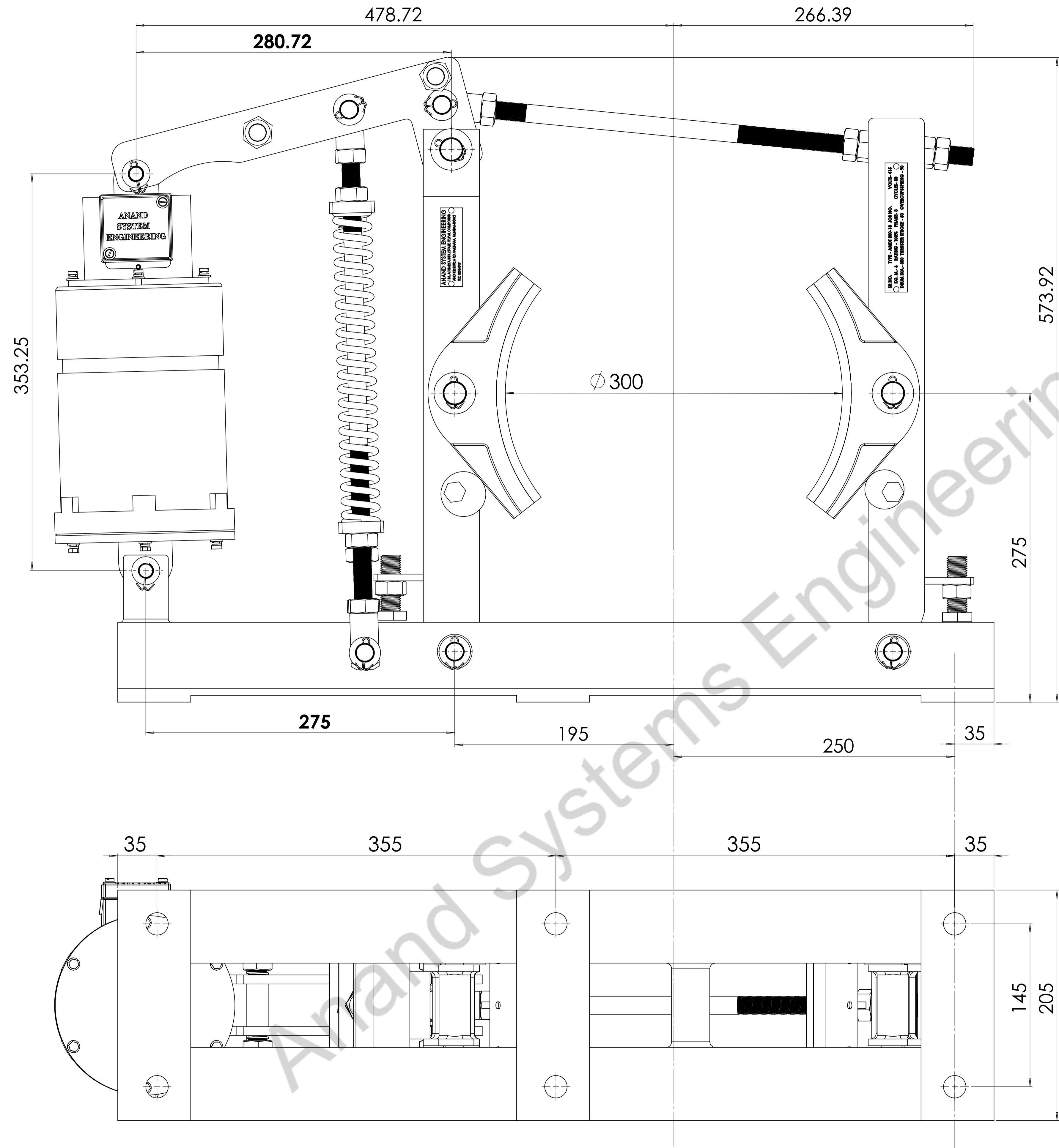
CONTACT NO: 9137620579

DWG NO.

SCALE:1:2

SHEET 1 OF 2

A1



COMPANY NAME:		ANAND SYSTEM ENGINEERING PVT LTD		DO NOT SCALE DRAWING	REVISION:
		ANAND SYSTEM ENGINEERING PVT LTD		TITLE:	
Email id: info@anandcontrol.in		CONTACT NO: 9137620579		MDT 300-18 BRAKE ASSEMBLY 2D	
DWG NO.		DATE		SIGNATURE	
SCALE: 1:2		SHEET 2 OF 2		A1	